

Project Facts

Project Name & Location:
AMB Property Corporation
Newark, NJ

Project Engineer & Manager:
Langan Engineering and Environmental Services, Inc.
River Drive Center 1
Elmwood Park, NJ 07407-1338
Mark K. Seel, P.E. (201) 794-6900

Completion Date: 2000

Cost of Entire Project: Unknown

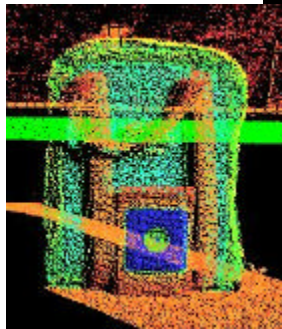
Work For Which Firm Was/Is Responsible: \$5,800



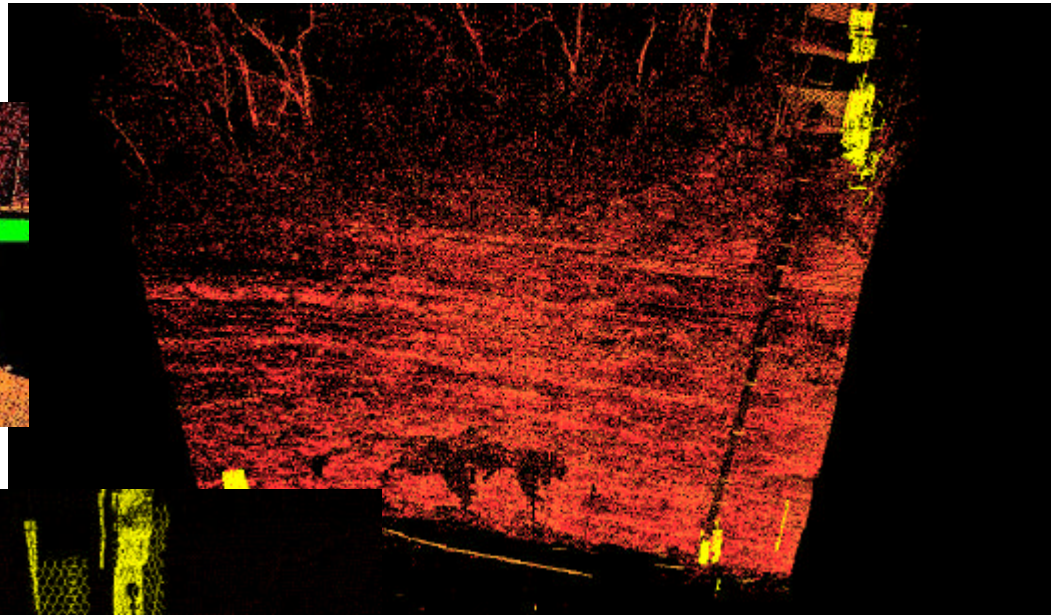
Photo of Rock Cut

Nature of Firms Responsibility:

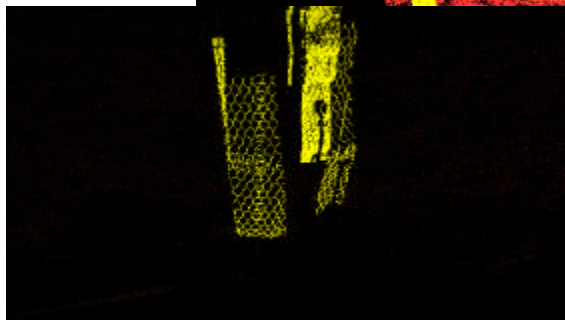
Land & Mapping Services was selected to provide a highly accurate three-dimensional (3D) scan cloud of an existing unstable rock face. The rock cut was approximately eighty-five feet high by thirteen hundred feet long and covered with wire safety netting. Our client required a grid spacing of two inches both horizontally and vertically along the entire length of the wall to be utilized in the design of a pile wall. After several trials it was determined that the scanner was picking-up the wire safety netting making our product of little use to our client. To say the least we were quite surprised to find that we were getting returns from the wire. Our scanner was set-up approximately two hundred and fifty feet from the lower wall face and the wire fabric was less than an eighth of an inch in diameter.



Target



3D Scan of rock face showing rock stratum, wet areas, drainage pipe and rock ties used to secure pipe.



Detailed scan of "wire netting".

Land & Mapping Services ~ 1(888) LMS-0027

Copyright © 2000 Land & Mapping Services