

## Project Facts

**Project Names & Locations:**  
Warren County Courthouse  
Warren County, PA

**Type of Project:**  
Production of Highly Accurate As-Built Drawings

**Owner:**  
County of Warren

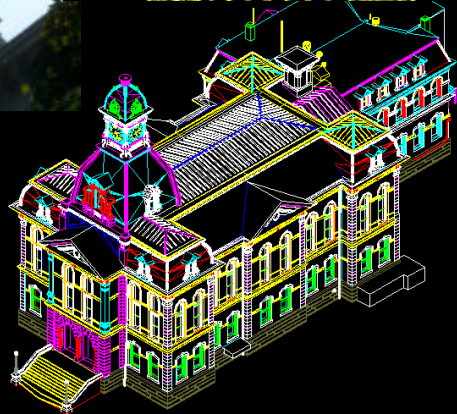
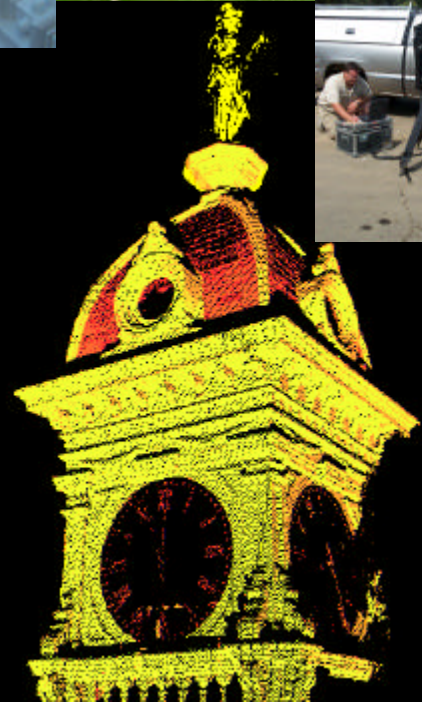
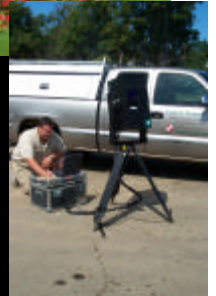
**Project Manager:**  
Warren Co. Commissioners  
Fourth & Market St.  
Warren, PA 16365  
Commissioner  
James P. Hunter, P.E., P.L.S.  
(814) 728-3400

**Work For Which Firm Was Responsible: \$4,000**

**Nature of Firms Responsibility:**  
Land & Mapping Services was contracted by the Warren County Commissioners to provide them with as-built drawings of their historic courthouse building. Use of this product was not only for archival as a highly accurate historical record but to help simplify the bidding process on up-coming renovations. By utilizing our state of the art Laser Scanning & Mapping System our staff was able to quickly provide the county with a highly accurate three-dimensional digital drawing of all exterior features.

**Work For Which the Firm Was/Is Responsible:**  
Laser Scanning  
Scan Modeling  
Cadd Services

**Output Format:**  
AutoCAD DWG



Land & Mapping Services ~ 1(888) LMS-0027

Copyright © 2000 Land & Mapping Services